



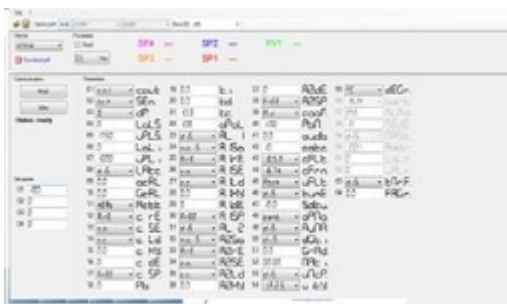
## LABSOFTVIEW

### SW- HW Kit for configuration/setting of Pixsys ATR/DRR/TCT devices

Conceived for the configuration and monitoring of Pixsys devices ATR/DRR/TCT, the software LabSoftView for Windows is easy to install and to operate.

Labsoftview allows to set the parameters and setpoint values. Settings can be saved on file and recalled for further use. Process and setpoint trends can be monitored and graphically visualized to support eventual adjustments of control algorithm and PID settings.

The kit includes software on CD, Memory Card with battery and USB cable.



Setting of parameters



Monitoring of PV/SPV

\_last update 25/10/2011

TRADEMARKS © 2010 PIXSYS Electronics, All rights reserved